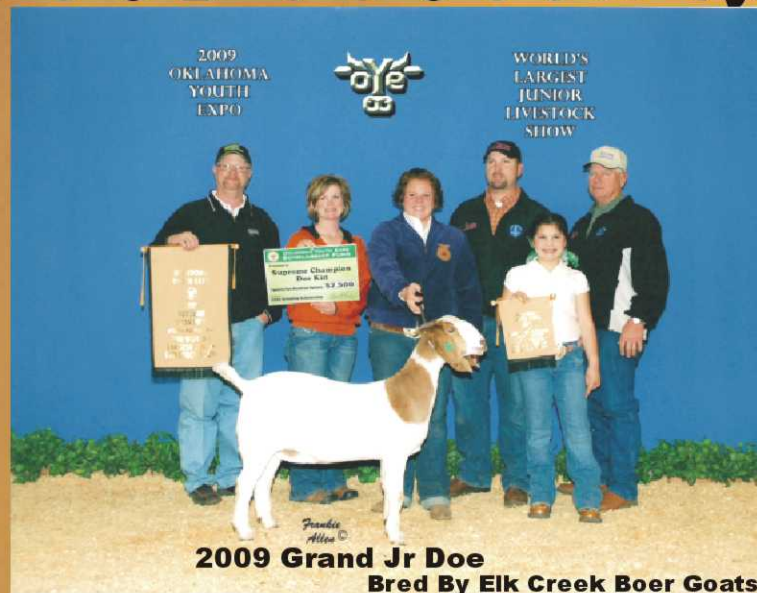


# 2010 OYE DOE 4 DOUGH RAFFLE



## Oklahoma Goat Promoters Association is Proud to Present 2010 OYE Doe 4 Dough Raffle with the following items given away

- DOE, YOUR choice of One of Three Does. Donated by Elk Creek Boer Goats**
  - Choice of 1000# feed for a year, Essential, Kent-Evergreen, Sure-Fed, Acco, ADM- MoorMan's, Land-O-Lakes-Honor Hanging Show Box, Donated by Haffner Family Show Goats**
  - Blower, Donated by Blue Ribbon Show Supply**
  - Stand, Donated by Agnew Boer Goats, James Agnew/Brenda Larner and Gillaspie Goat Equipment, Travis Gillaspie**
  - Use of an Aluminum Crate for a year, Donated by Cimarron Trailers**
  - Clippers and Blades, Donated by K-9 Sharpening and Blue Ribbon West**
  - Blankets; small and large, Donated by Mid-States Livestock Supply**
  - Use of Gallagher Scales, Donated by Gallagher USA**
  - Clipping and Fitting Video and One Day Seminar, for the club/chapter of winning person, Jeremy Church**
  - Entry Fees, to ALL Sanctioned OYMGA Jackpots as well as Tulsa State Fair and OYE, Donated by OKC West Sheep and Goat Division, Bob Regnier**
  - Miscellaneous Show Supplies, Donated by Outback Labs**
  - Ad Space and Recognition Article, Donated by Ag Youth Magazine, Larry Peck**
  - Live Breeding, to ANY Buck owned by Elk Creek for the give-away doe's first kid crop**
- Raffle to be handled by OGPA**  
**Tickets available for a \$ 25.00 Donation**  
**Drawing to be held at the Grand Drive for the Doe**  
**The Does and Equipment will be displayed at OYE and tickets available**  
**Do not have to be present to win**  
**Delivery arrangements will be made through OGPA if winning party is not present**  
**All Proceeds will be used at the Doe Sale**  
**All Does purchased will be Donated to Oklahoma State University to further their program**  
**Any remaining money will be used as Add-On money to Sold Does. No Buy backs will receive bonus money!**  
**Any disputes will be settled by the OGPA personal and will be final.**

### FOR TICKETS CONTACT

**LECIL**  
**580-393-1040**

**JOHN**  
**405-820-2713**

**LECA**  
**405-269-6831**

**JEREMY**  
**405-747-1647**